




DARWIN COLLEGE
CAMBRIDGE

ROOMS AND FACILITIES



A composite image featuring a window view of a sunset over a building and a desk lamp in the foreground. The window shows a large, multi-story building with a dark roof, surrounded by trees and a green lawn. The sky is filled with orange and yellow clouds, suggesting a sunset. In the foreground, a black desk lamp with a large, rounded shade is visible, positioned on a desk. The lamp is reflected in a body of water in the foreground. The entire scene is framed by a dark, curved border on the right side.

MEETING ROOMS AND STUDY SPACES



1 NEWNHAM TERRACE MEETING ROOM

- Suitable for meetings and small lectures of up to 20 people, lunch meetings of up to 12 people, film screenings etc
- Offers interactive A/V, allowing for hybrid meetings, Teams calls or presentations
- Bookable through the Bursary
- Food and drink permitted



ROOMS 5 AND 6, TOP FLOOR, 1 NEWNHAM TERRACE

- Small study/seminar rooms suitable for supervisions of up to eight
- Whiteboard but no A/V provision
- Bookable through the Bursary
- Food not permitted

THE STUDY CENTRE

- Three quiet study rooms with monitors
- Up to 4 people per room
- Not suitable for Zoom meetings
- Bookable through the DCSA website
- Food and drink not permitted



THE PARLOUR

- Suitable for socialising, reading and study
- Not suitable for Zoom meetings or phone calls
- Drinks allowed, but no food



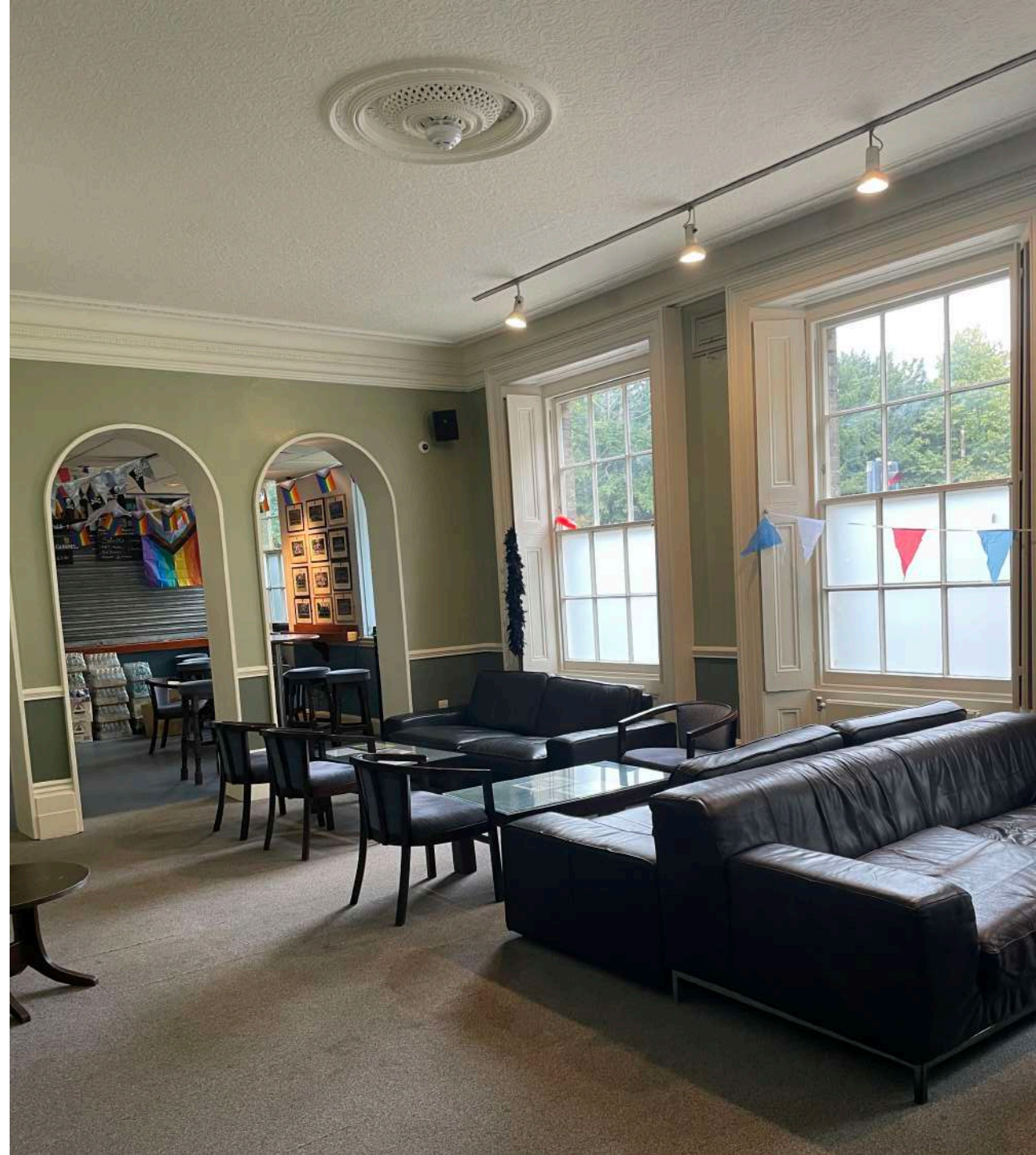


THE READING ROOM

- Quiet space for reading and thinking
- Open to all – no booking
- Drinks permitted, but no food

BAR SEATING AREAS

- Suitable for socialising, informal meetings, relaxed study or Zoom calls, outside of bar opening times
- Food and drink permitted





THE BRADFIELD ROOM

- Suitable for large meetings, lectures, performances, social events, rehearsals, dance, yoga
- Can seat up to 60, if laid out lecture-style
- Bookable through the Bursary
- Accessible on the ground floor, with gate to the street and access to toilets in the Study Centre

A photograph of a white door with a sign that reads "Hermitage Seminar Room". The door has a classic panel design with four rectangular panels. The sign is a small, white, rectangular sticker with black text and small black dots at each end. The door shows some signs of wear, particularly at the top and bottom edges of the panels.

• **Hermitage Seminar Room**

HERMITAGE SEMINAR ROOM

- Small study or seminar room for up to four people
- Accessible – ground floor, adjustable desk, next to accessible toilets and lift to dining hall
- Meeting table with four chairs
- Whiteboard but no A/V provision
- No food



MUSIC AND SPORTS



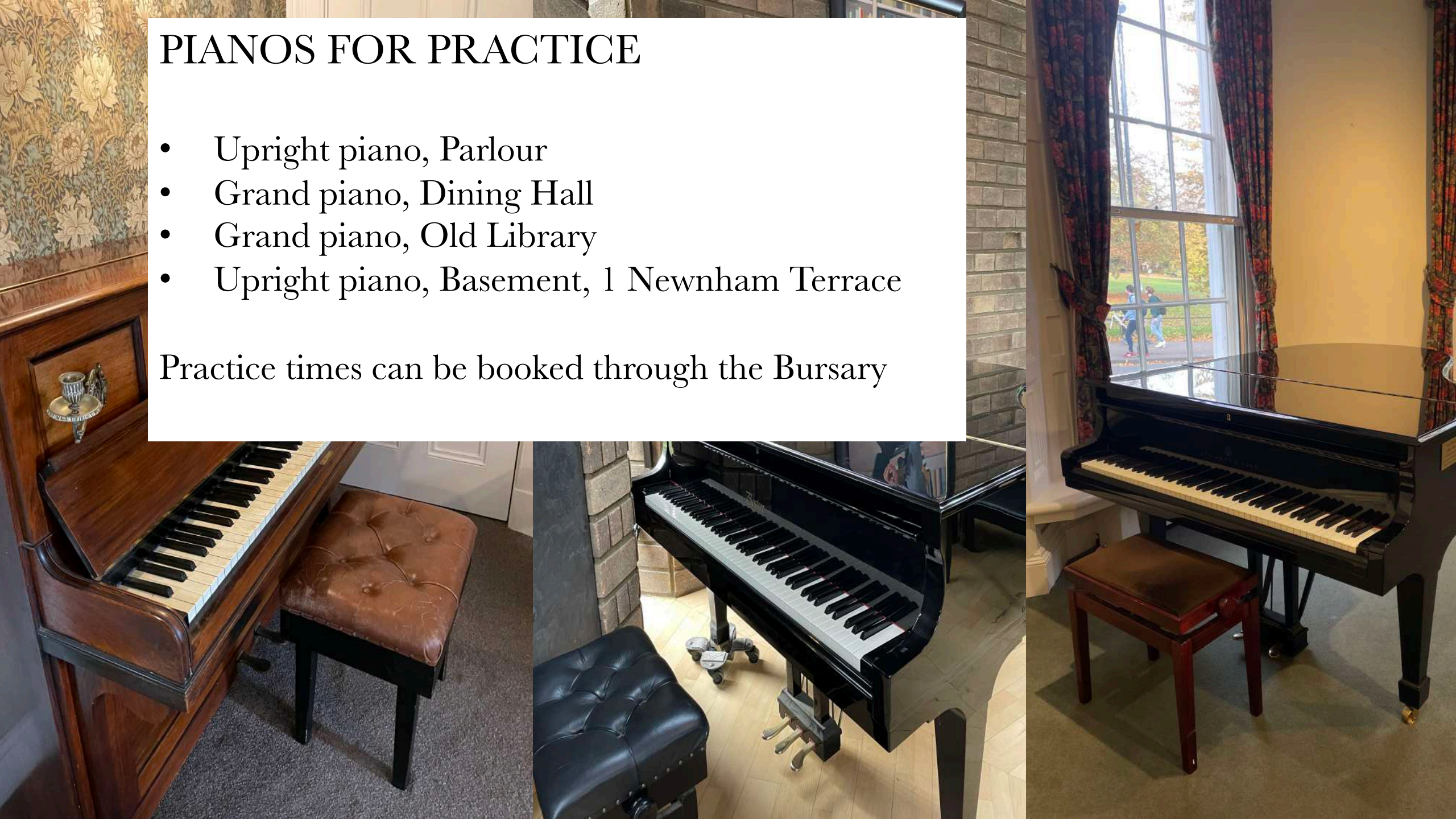
MUSIC ROOM

- Fully equipped practice room including drums, keyboard, guitar and bass amps
- Bookable through the DCSA website
- Quiet hours 8am-6pm Monday to Friday

PIANOS FOR PRACTICE

- Upright piano, Parlour
- Grand piano, Dining Hall
- Grand piano, Old Library
- Upright piano, Basement, 1 Newnham Terrace

Practice times can be booked through the Bursary





THE GYM – 53 Newnham Road (next to Gwen Raverat House)

- Newly opened and fully equipped
- Free to use for all current members
- Open 24 hours
- Book an induction through the DCSA Sports Officers at dcsa_sports@darwin.cam.ac.uk
- Cardio equipment bookable for 1 hour slots through the DCSA website



PUNTS, KAYAKS AND PADDLEBOARDS

The Darwin College Punt and Kayak Club owns six punts, six kayaks, a canoe, and four paddle boards.

Membership and booking information is available here:

<https://www.dcsa.darwin.cam.ac.uk/punts/>



SQUASH COURTS

Members of Darwin's squash club have free access to the courts at St John's College. Contact Raina to sign up.

raina.jia@mrc-epid.cam.ac.uk

MISCELLANEOUS SERVICES

- Showers are available on the main site
- There are personal lockers in the main toilets which can be booked for use by members
- Menstrual products and condoms are available in the main toilets if required
- Leftover meals are offered free of charge through the Community Fridge in the Study Centre
- The barbecue on the Small Island can be booked May-Oct through the Bursary
- A breastfeeding space is available for nursing mothers in the basement of 1 Newnham Terrace



CONTACTS

- To book a room or space via the Bursary, please contact bursary@darwin.cam.ac.uk
- DCSA bookings should be made via the booking website, booking.dar.cam.ac.uk, using your CRSID.

