



THE Darwinian



Darwin and Conflict

Conflict is arguably one of the main causes, and consequences, of global challenges. This issue has a special focus on conflict, drawing on the knowledge and expertise of members of the Darwin community.

Also inside:



The Earthshot Prize



The Darwin Family and Cambridge



Exploring the Heritage of the College

A Message from the Master

Dr Mike Rands

Global Challenges, Local Solutions and Planning for the Future

Like Darwinians all over the world, I am very aware of the growing number of global challenges we face. One of the people I respect most, Sir David Attenborough, said in his plenary address to the Climate Change CoP in Glasgow last year: “We are already in trouble. The stability we all depend on is breaking. This story is one of inequality, as well as instability. Today, those who’ve done the least to cause this problem, are being the hardest hit. Ultimately, all of us will feel the impact...”



The United Nations highlights addressing climate change, decolonisation, food security, human health, inequality, migration and poverty as priorities for the coming decade. Not surprisingly, many of these issues are interrelated; tackling one can have a positive impact on the others or vice versa.

During my first 18 months as Master, I have been increasingly impressed and excited by the efforts of the Darwin community to address such global challenges. Significant contributions come from a wide range of research conducted by our Fellows including: the University of Cambridge’s climate change programme, Cambridge Zero, led by Emily Shuckburgh; Cambridge’s Strategic Research Initiative in support of the UN Sustainable Development Goals, co-directed by Alan Blackwell; the Cambridge Institute of Public Health directed by Carol Brayne; and the pioneering work to create novel vaccines to combat influenza and coronavirus led by Jonathan Heeney. As 2021 drew to a close, we were really pleased to hear that clinical trials had begun on Jon’s new Covid19 vaccine!

Last year Darwin College joined forces with Cambridge Zero and the Cambridge Centre for Science and Policy to further enhance the policy impact that research can have on combatting

climate change through the appointment of three David MacKay Post-Doctoral Research Associates in recognition of the late Sir David MacKay – a distinguished Darwin Fellow, Regius Professor of Engineering, Government Chief Scientific Adviser on Climate Change, and author of *Sustainable Energy without the Hot Air*. Each Research Associate is exploring a different policy issue: the decarbonisation of healthcare; the relationship between genetically modified organisms and net zero carbon emissions; and what we can learn from past civilisation collapses to address climate change and emerging technologies.

We were also very happy that one of Darwin's nominations for an Earthshot Prize reached the 15 finalists (out of over 750 applications) earlier this year. The Prize, a new scheme launched in 2020 by Prince William, The Duke of Cambridge, is designed to incentivise change to repair our planet. Our nominee, Sanergy, recycles human sanitary waste to create fertiliser, animal food and biofuels. Currently based in Nairobi, Sanergy now aims to scale-up its activity to other urban conurbations with the support of the Earthshot Prize, Darwin College and the University of Cambridge (see article on page 20).

As I write, we are looking forward to welcoming our eminent speakers for the 2022 Darwin College Lectures on FOOD. This topic also reflects on global challenges and includes a fascinating array of talks including: *Food and Climate Change*; *Food, Power and Society*; and *Should Cats and Dogs go Vegan?! Do join us online or in person for these thought-provoking lectures.*

Within the College, our students and staff continue to take a growing number of local actions to address global challenges. Last academic year, students launched Project Second Life, a highly successful scheme by which departing students gift practical belongings for incoming Freshers and in so doing, reduce the need for purchasing new materials. They also support RE.USE, a project to remove single-use food containers from the College. As I reported in the last Darwinian, the College launched an annual Green Week and the catering Team and DCSA continue to champion a growing number of measures to reduce our environmental footprint. One of the most exciting recent developments is a

study that shows how the College could reduce its energy consumption and degasify by switching to a heat pump-based source of energy, potentially including the use of water-source heat pumps. While further studies and costings are required, this should enable Darwin to achieve zero carbon emissions in the foreseeable future.

Turning to the future, I am delighted to report that the Governing Body have decided the College would benefit from developing a Strategic Plan over the coming year. Such a plan will consolidate Darwin's existing strengths, articulate a shared long-term vision for the College and set out our strategic priorities for the next ten years. This will ensure that Darwin has a distinct niche in relation to the rapidly evolving state of higher education and research, and a clear and exciting vision and framework for exciting new developments in the College.

Darwin and Conflict



Conflict might arguably be one of the main causes, and indeed consequences, of global challenges. This issue of the Darwinian has a special focus on conflict, drawing on the knowledge and expertise of members of the Darwin community.

I hope you enjoy the articles from current student **Razan**

El Helou who shares her personal view on the history of conflict and uncertain future of her home country, Lebanon.

Wendy Pullan, a Darwin alumna (1989) who discusses the effect of recent conflict on urban settings. In addition, current Fellow,

Paolo Campana, outlines the complex and often horrifying phenomenon of human smuggling over European borders. And,

Stefanie Ullmann, Associate Member of Darwin College looks at Counterspeech and whether it can be automated.

Photo, opposite: Front left is Mike Rands, Darwin Master. He is leading graduands to the Senate House with Darwin Dean, Duncan Needham. Photo Credit: Andrzej Bugajski

Migrant Smuggling in Europe: A Complex Phenomenon

Dr Paolo Campana is a Fellow of Darwin College and University Lecturer in Criminology and Complex Networks. He is currently working on the issue of the trafficking and smuggling of human beings into Europe, the movement and emergence of Mafia-like organisations and their impact on local communities. In addition, he is investigating the mechanisms underpinning corporate fraud. Here he outlines the complex and often horrifying phenomenon of human smuggling over European borders.



On 24 November 2021, when Britain woke up to the news that a small boat had sunk in the Channel the night before, leaving at least 27 people dead, I was sad but hardly surprised. I feared it would have been only a matter of time until one of those perilous journeys would have gone terribly wrong. While on a good weather

day you can see Dover and the British coastline from a beach in Calais or around Boulogne sur Mer, crossing can be tricky – and the inflatable dinghies used by people smugglers are not always able to stand rough sea conditions.

I am a criminologist and I study how markets – as well as individuals and organisations – operate outside the realm of the law. My work specialises in organised forms of criminality: this includes Mafia-type organisations, gangs, human trafficking and people smuggling. I tend to work with numbers, particularly using network analysis techniques to explore how and why people – mostly offenders – establish interactions of various natures, including cooperation and conflict. But numbers need context, and for my work on migrant smuggling I travelled to sites in several countries to conduct interviews with migrants, law enforcement officials and other key informants.

Migrant smuggling is a complex phenomenon shaped by multiple factors operating at different levels. Human smuggling is different to human trafficking: the smugglers' commodity is the crossing of borders rather than control over people – and war, poverty and globalisation have caused demand for this commodity to explode in recent years: slightly more than 2 million illegal border crossings have been recorded at the Greek and Italian borders between 2014 and 2020. As with any market, let alone one of the fastest growing on the planet, where fortunes are to be made competition is ferocious.

We can think of human smuggling as a “quintessential free market”, with little intervention and no regulation beyond

the market's own mechanisms. Some smugglers cheat, some overcharge, some care about safety, some don't care who lives or dies. Some offer 'premium' services, fast-tracking migrants through smuggling routes. The law struggles to apprehend smugglers, and when they do manage it, any void created is likely to be immediately filled. The main things that stop smugglers defrauding many more migrants, or drowning them in unseaworthy boats, are individual morality and maintaining a reputation that attracts more business.



Importantly for a pure free market such as human smuggling, there are no monopolies. While newspaper headlines will often describe 'Mr Big' figures or talk of Mafia involvement, my research shows that smuggling networks are fragmented: small groups with rudimentary hierarchies jostling for trade in crowded marketplaces. Despite smuggling routes traversing the globe, individual operations are stunted and localised – nobody is in control of all stages of the journey. Smugglers operate as independent actors in various stages of an overall journey, whether it's a sea or a desert crossing, or temporary city accommodation, or car trips over European borders. While some smuggling groups make arrangements with each other, there seem to be no exclusivity agreements and – despite the localisation of smuggling networks – very little territorial control.



Above: Paolo Campana giving a lecture

Opposite: Boats used by smugglers; seized by the authorities; stored on the island of Lampedusa awaiting demolition. Photo Credit: Paolo Campana

This absence of monopolies is radically different to other black markets such as Mafia-like protection rackets. Even in Sicily, where both human smuggling and the Mafia are major problems, I have observed no connection between the two. Almost anyone can set themselves up as a smuggler: from street vendors who sell border crossings as a side-line, to tour guides who switch to smuggling, to fishermen who are already equipped with boats for the sea crossings. It is the free-for-all nature of this marketplace that gives it the flexibility to expand quickly and accommodate soaring demand. Human smuggling is an enterprise with low barriers to entry, low skills and relatively low capital requirements – yet it has the potential to be far more lucrative than most other occupations available to people on the smuggling routes.

One of the key areas is exploring how migrants choose who to trust in such a busy and dangerous marketplace. This comes back to reputation. While some smuggling networks

are organised around ethnic lines, and word of mouth is important, digital forums have become increasingly influential in establishing trustworthiness. Smugglers often advertise their services on social media, where they try to attract ‘customers’ by responding to queries, competing through prices, and promoting credentials in the form of recommendations from other migrants.

I often get asked what can be done to stop human smuggling. This is the proverbial million-dollar question! There are a variety of actions that can be taken – addressing different parts of this complex phenomenon. Ultimately, it boils down to finding the right balance between *enforcement* against smugglers and *protection* of migrants – and with it, some difficult political decisions and a host of moral dilemmas.

Follow Paolo’s work at:

www.crim.cam.ac.uk/People/dr-paolo-campana

Political Violence in Lebanon:

The aftermath of the Tayouneh Conflict

Current Darwin student Razan El Helou shares her very personal view on the history of conflict and uncertain future of her home country, Lebanon.



Conflict in itself is neutral; it is a necessary and inevitable part of human interaction on multiple levels. In Lebanon, conflict is almost always waged violently. Violence is present in every aspect of life, be it individual, institutional, political, or socio-cultural. During the secular movement that began in October 2019 across Lebanon, a narrative of peace and true coexistence existed among the residents, a phenomenon that showed awareness and ownership of the socio-political state of the country. This narrative was soon overshadowed by the economic and political pressure to sustain the existing corrupt imbalance of power imposed by local and international governments who continue to use Lebanon as a proxy battleground.

To make matters worse, the worldwide health crises of COVID-19 was soon to follow.

'Lebanon' as a concept was only formed 101 years ago in 1920, yet its brief history is stained with violent conflict. Due to the tyranny of various governments and governors whose interests fail to serve the nation, we fight over identity, culture, and history. To this day there is no unified book on Lebanese history as the 18 sects in the country differ in their reading of it.

Lebanon is perhaps the country most subjected to social, political, and economic events, changes, and catastrophes in the Mediterranean; let alone in modern history. These include: the massacres of Mount Lebanon (1860); the declaration of the State of Greater Lebanon (1920); Lebanon's Independence (1943); the Cairo Agreement that paved the way to the civil war (1969); the Civil War (April 13, 1975 – October 13, 1990); the Israeli Invasion (1982), the February 6 Intifada (1984); the Taef Agreement (1989); the Seven Days War on Lebanon, also known as Operation Accountability (1993); Operation Grapes of Wrath (1996); the Israeli Withdrawal from Lebanon (2000); the Assassination of Rafic Harriri (2005); the July War (2006); the May 7 conflicts (2008); the Doha Agreement that ended the former conflicts (2008); the Israeli-Lebanese conflict, also known as the Edayse conflict (2010); the Kabrshmoun – Al Basateen incident (2019); the 17th of October uprising/revolution (2019); the August 4th Beirut Port Explosion (2020); and finally, the most recent Tayouneh conflict (2021).

Given Lebanon's history the country is charged with friction and political tension, which came to the surface on Thursday October 14th in Tayouneh, an area that is adjacent to the southern suburbs of Beirut. The violence in the political speech that arose because of this event is not surprising. The incident accentuated a security gap and a social shock; one which Lebanon cannot overcome except with a lot of wisdom, slowing down, and socio-political awareness aimed towards protecting coexistence and civil peace as stated in the Lebanese Constitution.

The impartial observer of both the apocalyptic scene that recently occurred and the responses of various Lebanese political parties which followed, would be struck by the violent rhetoric from all parties. The leader of the Lebanese Forces (LF) who considered the event a normal matter that happened in response to the Hezbollah posture towards the judge responsible for the Port Explosion case, dangerously referred to the incident as a "mini May 7", alluding to the conflicts that broke out in 2008.

Similarly, the response statement of the Loyalty to the Resistance Bloc did not invite its supporters to calm down. On the contrary, he promised a violent response and reckoning, stating that they “will not accept the blood shed to go to waste”. He then continued to remind the former of their history, highlighting the role the leaders of the LF have played in the massacres and threats towards civil peace.

Meanwhile, the Secretary General of Hezbollah said that the real program of the LF is to reignite a civil war that will change the demographics of the country. He continued to reveal that Hezbollah has a hundred thousand fighters, as well as many supporters, and an environment that embraces them. The graphic scenes directly affected children and school students who hid in the hallways, threatened, killed, and injured various civilians, paralysed the government meetings, restored the war rhetoric, and brought back the historic memory for the conflicting parties.

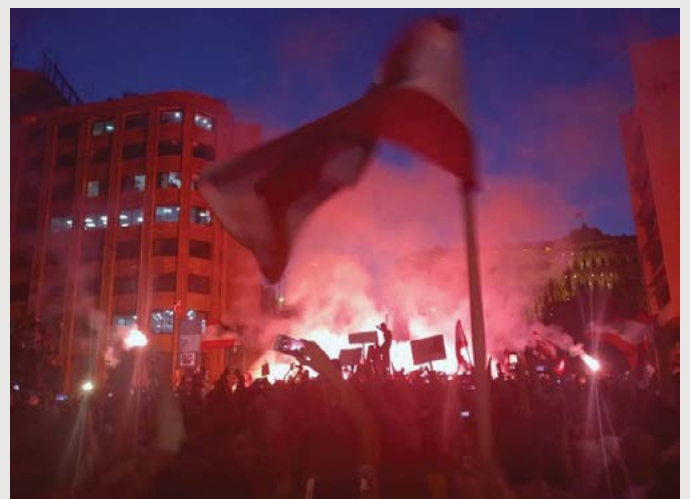
In front of this reality charged with violent speech, incitement, blood, and the threat of war, Lebanon is in a tragic situation in every sense of the word.

Here, three pressing questions must be asked:

Will humanitarian action be able to hold the war lords and corrupt governors accountable without directly affecting innocent exhausted civilians?

Should, or can, the Lebanese people forget and move away from violent conflict?

Can we overcome those who refuse forgiveness?



Top: Graffiti work inside the Old Opera (the egg) that reads: Who is stronger the sect or hunger? Photo Credit: Joelle Oneissi

Bottom: A protest in Riad El Solh in Beirut. Photo Credit: Joelle Oneissi

Urban Collisions:

Rethinking conflict, reconstruction, heritage

Professor Wendy Pullan, a Darwin alumna (PhD Architecture 1989) and former Darwin Fellow, is Professor Emerita of Architecture and Urban Studies at the University of Cambridge. She is currently Director of the Centre for Urban Conflicts Research. Professor Pullan has published widely on European and Middle Eastern architecture and cities, examining the processes of urban heritage, conflict and change, both historical and contemporary. Here she discusses the effect of recent conflict on urban settings.

We are now witnessing more war destruction in cities around the world than at any point since World War II. At the same time, there is growing demand for a more transparent focus on heritage as part of the recognition of cultural and political identities.

Reconstruction of buildings, infrastructure and the wider urban environment is not a straightforward process and not simply a matter of the vision, skill or good intentions of architects, planners or conservators, or the result of a fair and comprehensive legal framework. Rather, there are political, social, and cultural interests that may have opposing views and claims. These can lead to heated antipathies in the approaches to urban rejuvenation.

In the image of two attached apartment buildings in Mostar, both victims of the civil war that devastated large portions of the former Yugoslavia, we find one building reconstructed and the other not. Why this discrepancy exists decades after the war depends upon complicated local conditions that need not concern us here. Rather it is the symbolic relationship of these two buildings, so similar but with different fates in a conflicted landscape, that raises questions. Together the structures represent two diverging paths, from an initially intact city, through war

destruction, and then to contrary renewal attempts. In the *Centre for Urban Conflicts Research*, we examine the problems and pitfalls of such trajectories and I address some of them here.

To do so, I first recall the earthquake that destroyed Lisbon in 1755 and not only irrevocably changed the city but became a pivotal moment in European thinking in a seminal debate

between regarding disaster as an act of God or an example of the nascent science of seismology. From Voltaire to Adorno the quake has been seen to herald the thinking of modernity. With the earth still trembling, *The Gentleman's Magazine* reported that although the city was 'one continued heap of rubbish and ruins.... they talk of nothing but rebuilding it'. The most radically rational plan was chosen, a linear neo-classicism with grid configuration and a repetitive pre-fabricated system of

construction to ensure regularity and speed. The new Lisbon represented the triumph of rational authority and human control of destruction.

It set in place a logical direction where modern culture is seen to proceed from chaos to order. I would argue that this has remained the basis of reconstruction and heritage thinking and practice.





Above: *Destroyed Aleppo 2013. Photo Credit: FCDO-Wikicommons*
Left: *Mostar apartment buildings 2011. Photo Credit: Pullan-Centre for Urban Conflicts Research*

However, if we jump ahead to the destruction of the city of *Aleppo*, a different paradigm emerges. Not only Syria's major industrial centre but a city of great historical significance, Aleppo was added to the World Heritage List in 1986 and fully refurbished to become Islamic City of Culture in 2006. Yet with the 2011 Arab Spring revolution and subsequent civil war, Aleppo soon succumbed to heavy sectarian fighting and bombing by the government regime and its allies so that much of this important city has been left in ruin.

The devastation of Aleppo raises many problems: why intentionally destroy your own city? Why do international heritage protocols have so little power? With a civil war that has caused massive casualties, deaths and displacement, what are the chances for a city like Aleppo in the future?

There is little evidence that the conflicts have ended; the population remains fragmented, dispersed and hostile, reconstruction proposals are rooted in global privatised development with little chance for local input, and heavy political agendas dominate every move. Any reconstruction of Aleppo is subject to the nature of its conflicts and every

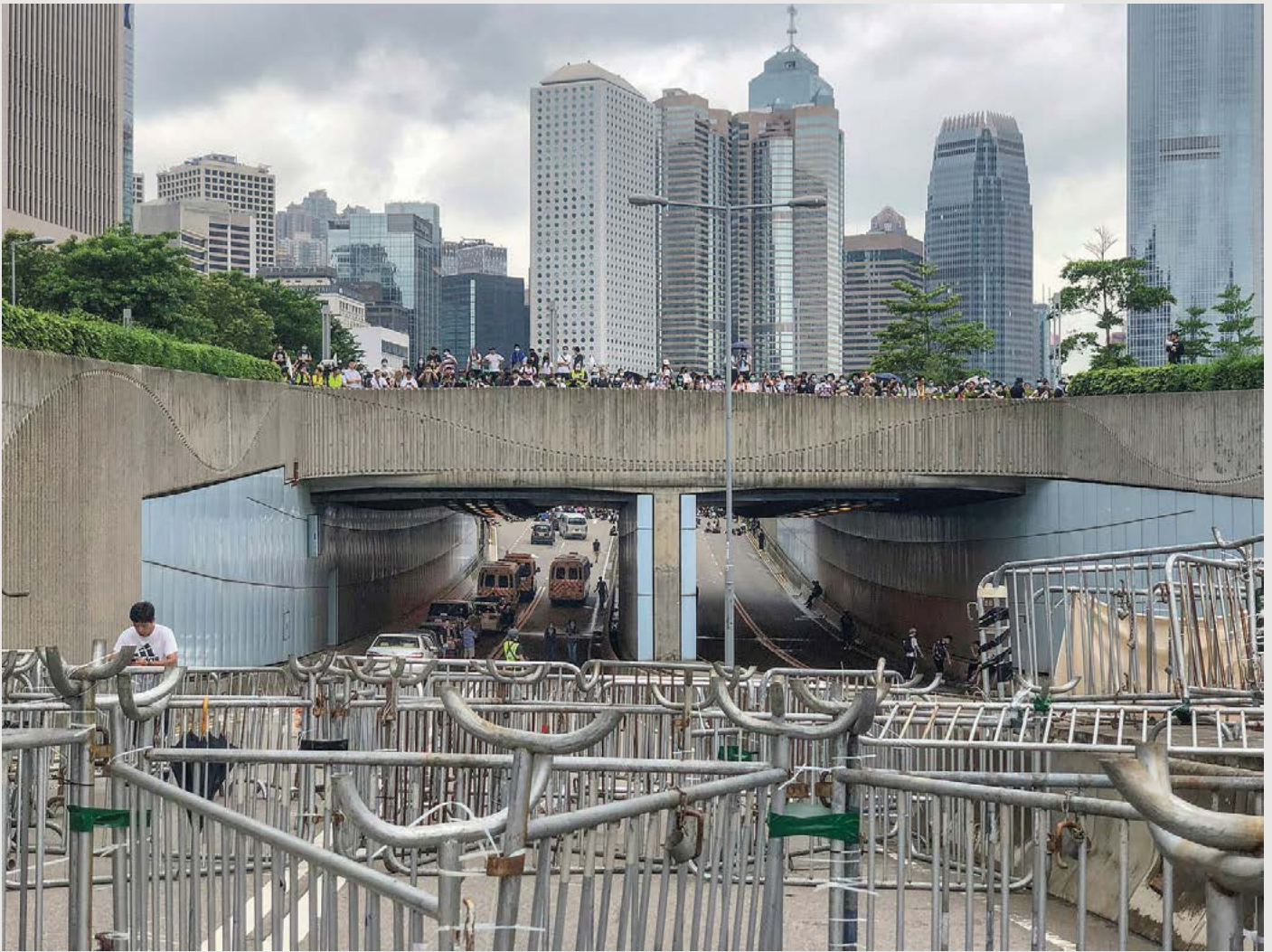
indicator points not to a resumption of order but to future chaos.

Aleppo and many other conflicted cities across the world are subject to two major changes, one in the nature of conflict and the other in the role of cities. Mary Kaldor and others have written about 'new wars,' fought primarily in the name of identity politics rather than ideological or geopolitical interests, and directed against civilians to control and/or displace populations. These conflicts tend to be long term, even indeterminate, with periods of heavy violence interspersed with phases of relative peacefulness.

A war that is declared, fought by large armies, ceased with negotiations, and followed by a period of post conflict is increasingly rare. It makes the idea of 'post conflict' questionable and peace and conflict may be more simultaneous than we think.

Urban settings are increasingly the arena for these new wars and whilst cities may sometimes be targets, the conflicts are often generated from within.

Darwin and Conflict



Above: Hong Kong 2020. Photo Credit: Incendo-Wikicommons

Relatively contained hostilities can escalate into full scale battles and outcomes may be inconclusive. Although such conflicts can be long term and bring irrevocable change, urban centres are not only passive recipients but employed to wage war and prolong conflicts. New wars feed on urban conditions taking strategic advantage of planning and urban infrastructures.

For example, in the Hong Kong Anti-Extradition Law Amendment Bill revolt in 2019–20 urban spaces and objects such as road medians, flyovers, police barriers and escalators were used in ad hoc ways for battles by both police and protesters. In many conflicted cities, urban demographics reflect patterns of destruction, population control, ethnic cleansing and, ultimately, plans for reconstruction.

We find that reconstruction is not an isolated post-conflict activity but an integral part of the conflicts that formed it. A number of underlying drivers contribute to the relationship.

They include:

Discourse and image

Conflict has become a new form of heritage: in lamenting the obliteration of the Berlin Wall, an East Berliner stated to me that 'it may be a bad history but it is our history.' Electronic media is critical for disseminating conflict images: in Jerusalem, the separation barrier (wall) has for many become better known than the city's holy sites. As Andrew Herscher has noted, 'material destruction is cultural production.' We can ask, are culture and violence in opposition or complementary to each other?

Heritage politics

Heritage meanings and practices are never neutral and may be used to influence local populations and tourists and to gain international support. Indeed, political interests may alter conservation processes to create new forms of cultural production. There are three main ways of doing this: the destruction of the sites and therefore of memory; the destruction of the environment around sites, including everyday life in them; and the invention of new historic sites and a new everyday life. That is to say, the creation of heritage for political reasons. These factors influence how the city may or may not recover from heavy conflict.

From memory to identity politics

Narratives of memory easily transform into narratives of rights, stoking inherent conflicts. In doing so, urban monuments and memorials become clash points for racial, ethnic and national struggle. Single cultural identities may be promoted to replace previously diverse public places. It is a skewed process at least in part because memory is qualitative and may vary with the perception of the individual or the community, whereas rights are seen as absolute.

Destruction and demography

*Ethnic, religious and racial divisions in cities are rarely diminished by conflict and war. The destruction of specific urban areas may be targeted rather than collateral. In some Syrian cities, such as Homs, the area's most heavily damaged in bombing correspond very closely to the neighbourhoods of so-called urban informality – that is, areas of undocumented housing for the poor. These informal areas were of the home of rebel groups. *The pursuit of ethnic change by those in power follows a specific process, from targeted destruction to ethnic cleansing, and then planned reconstruction to house new residents.**

Reconstruction economics

Large global developers are rarely stakeholders in the cities they reconstruct. They value the ability to completely bulldoze and rebuild; total reconstruction is more lucrative than small scale rebuilding of individual buildings and streets. At the same time, political demographics can be manipulated to suit victorious powers. Original residents may face internal or foreign displacement and find it difficult or impossible to return to their homes or influence the process of reconstruction. The result favours manipulated ethnic consolidation and reconstruction based upon new political values, originally stemming from the destruction itself.

Public space

*In times of violent conflict many urban residents retreat into their own neighbourhoods where they feel safe and comfortable. Public space – for example, streets, markets, squares, bus stops, incidental space where people gather – is often the first to suffer as it is difficult to control or make secure and it quickly declines. But recovering public space offers the possibility of some everyday civic life and interaction between diverse groups, however minimal. *Even if it is only a matter of seeing a face that looks different to one's own or hearing another language, public space begins to allow collective encounters in diverse ways.**

There are no quick fixes. Urban conflicts tend to be long term and complex and peace solutions are often uncertain and murky. Both heritage and reconstruction can be and are used as weapons; they are not symptoms or incidental phenomena. Context is critical; heritage sites and reconstruction are part of wider conditions and public space may provide positive direction. Nonetheless, although the inherent contradictions in heritage practices sometimes can be accommodated, they are not easily reconciled.

Counterspeech:

Can and should we automate it?

Stefanie Ullmann is an Associate Member of Darwin College and a Postdoctoral Research Associate on the project Giving Voice to Digital Democracies: The Social Impact of Artificially Intelligent Communications Technology.

Stefanie has a PhD in Linguistics, which focussed on a critical corpus-assisted study of media and political coverage of the 2011 Arab Spring revolutions. Her most recent work has focused on quarantining online hate speech, misinformation, gender bias in machine translation, dynamic data statements and exploring counterspeech approaches to fighting hate speech.

As harmful language continues to taint online communication, researchers and practitioners are acquiring new and more effective ways of combatting it. The documents revealed by Facebook whistle blower Frances Haugen in October 2021 have only reinforced the already persistent impression that Facebook's and other social media company's current approaches to online hate speech are insufficient and continue to fail their users.

To date, social media companies still follow a reactionary approach to handling harmful content. Once reported, content is moderated and, if it violates the company's guidelines, taken down and the user may be blocked. This approach has frequently been the subject of controversial public discussion due to several reasons. Definitions of hate speech and guidelines vary from company to company, deleting content is equivalent to censorship and a threat to freedom of speech, what is more human moderators are often employed by subcontractors and can work under unethical and unsafe conditions.

While some countries, such as Germany and South Africa, have enforced new laws and bills to combat hate speech and hold companies responsible, others have issued White Papers (e.g., the UK's *Online Harms White Paper*) and transnational campaigns (e.g., the European Commission's *Code of Conduct*). Meanwhile, lawyers and free speech advocates continue to emphasise the potential dangers of suppressing any unwanted speech to our democratic values and call for counterspeech as only permissible option (Strossen 2018; Stern 2020).

In the 1920s, former lawyer and Associate Justice of the Supreme Court of the United States, Louis D. Brandeis, famously proclaimed, "If there be time to expose through discussion, the falsehoods and fallacies, to avert the evil by the processes of education, the remedy to be applied is more speech, not enforced silence."

More recently, the *Dangerous Speech Project* has defined Counterspeech as "any direct response to hateful or harmful speech which seeks to undermine it." Counterspeech responses can range from spontaneous, organic responses to organised counter-messaging campaigns (e.g., #jagärhär or #iamhere).

Benesch et al. 2016 distinguish eight Counterspeech strategies that have shown to be successful: Presenting facts to correct misstatements or misconceptions, pointing out hypocrisy or contradictions, warning of offline or online consequences, affiliation, denouncing hateful or dangerous speech, visual communication, humour and using an empathetic tone. *In contrast, using a hostile or aggressive tone and silencing have been found to cause a backfire effect and contribute to a further escalation of hateful rhetoric.*

One of the key questions researchers have been seeking to answer in recent years is: Can Counterspeech change the behaviour of hateful speakers?

Studies have shown that changing someone's behaviour is a challenging task and can most likely be achieved in one-to-one or many-to-one conversations (Benesch et al. 2016; Saltman & Russell 2014; Briggs & Feve 2013; Saltman, Kooti & Vockery 2021). One of the most prominent examples is Megan Phelps-Roper. A former member of Westboro Baptist Church, she eventually left the church after following discussions on Twitter which made her begin to question the hateful ideology of her family. However, to truly change someone's mind or behaviour is an intense and laborious task and only occasionally successful. *A much more important intention and motivation behind Counterspeech seems to be to reach cyber-bystanders and set off a kind of contagion effect.* Research shows that users are less likely to use hateful speech after observing previous hate speech being "moderately censored" (Álvarez-Benjumea & Winter 2018). Further studies also suggest that organised movements tend to be more effective than striking out on one's own (Garland et al. 2020). In the end,



Counter speech button. Photo Credit: Adobe Stock

as rewarding as it may be to be an active counter speaker, it can equally be lonely and dispiriting work (Benesch & Manion 2019).

The question has been raised, whether technology, specifically natural language processing (NLP) systems, may be developed and employed to reduce the burden on the human individual and perform Counterspeech online?

An automated Counterspeech system essentially consists of two parts: one component needs to be able to detect hate speech, while another is responsible for composing an appropriate Counterspeech response. While a plethora of studies exist on the detection of hate speech, research on automatic detection, let alone generation, of Counterspeech is still in its infancy.

This is largely due to a number of challenges including the difficulty and subjectivity of automated identification (Kennedy et al. 2017), the wide range of potential communicative strategies (Wright et al. 2017) and the requirement of manual coding/annotating (Mathew et al. 2019). Furthermore, the number of available datasets is still limited. Compared to the already challenging task of automated hate speech detection, understanding and recognising Counterspeech requires successful processing of longer conversations and interactions between users.

Finally, one chief question remains, be it for human-human or human-computer conversations: What is a good Counter response?

The answer to this is highly situational and depends on a number of social and contextual factors. Still, one notable study and Counterspeech dataset by Chung et al. (2019) is multilingual (English, French, Italian) and consists of over 14,000 hate/counterspeech pairs. The counter narratives, as the authors call them, were originally provided by NGO staff. Studies like this are of tremendous importance, especially because the more high-quality datasets are available, the better systems can be trained, leading to more accurate results.

Fully automated Counterspeech generation is not (yet) possible, and the linguistic complexities of the task are likely to remain an obstacle for artificial intelligence. However, we can use technology to assist users and human counter speakers. This could be in the form of an app, a browser extension, or an online interface. Be it a hate speech detector that then suggests a suitable response, or a system that offers examples of replies based on a taxonomy of Counterspeech types (presenting facts, pointing out hypocrisy, warning of consequences), a (semi-)automated system that provides prompts for the user to generate Counterspeech could be key in helping individuals overcome the initial hurdle of thinking of a response. Further work is needed to improve the quality of training datasets, annotation, and evaluation so that both humans and machines can better understand and, subsequently, generate effective Counterspeech.

Appointments and Awards

Darwin College Appointments:

Darwin Fellow **Professor Anne Ferguson-Smith** has been appointed Pro-Vice-Chancellor for Research and International Partnerships at the University of Cambridge. She is the Arthur Balfour Professor of Genetics at the University of Cambridge and has recently served as Head of the Department of Genetics. There are currently five Pro-Vice-Chancellors of the University of Cambridge, whose role includes supporting the Vice-Chancellor in providing academic leadership to the University, as well as working with senior administrators to help drive strategy and policy development.

Professor Anne Ferguson-Smith has also been awarded the Buchanan Medal 2021 for her pioneering work in epigenetics, her interdisciplinary work on genomic imprinting, the interplay between the genome and epigenome, and how genetic and environmental influences affect development and human diseases.

Darwin Master, **Dr Mike Rands**, was appointed a Deputy Vice-Chancellor of the University of Cambridge in October 2021.

Appointments and Awards throughout our Community:

Sir Thomas Woodcock, a Darwin alumnus (Law 1973), has been awarded the KCVO in the 2021 Queen's Birthday Honours List for his work as Garter Principal King of Arms.

Zoom Networking Event for Alumni working in Leadership Roles in Academia

The Alumni and Development Team are organising a networking event for Darwin alumni who work in University Leadership roles. This is a new initiative that has been suggested to us by an alumnus, and it is one we would very much like to take forward.

Today the pace of change in academia is continually escalating and this can be extremely challenging. To discuss this and other topics we propose to host a networking event in Spring 2022. If you are interested in joining this, please email development@darwin.cam.ac.uk and we will host one or possibly two events depending on the time zones involved.

Equity, diversity and inclusion at Darwin

Darwin College is renowned for its rich diversity of students and alumni from all over the world. We are proud of our egalitarian culture and our efforts to be welcoming, supportive and engaging. As a member of the Collegiate University of Cambridge, Darwin College is committed, in its pursuit of academic excellence, to the following principles:

- Equity: the promotion of fairness by offering equality of opportunity and addressing needs relative to the individual;
- Diversity: recognising and valuing difference and avoiding systemic discrimination;
- Inclusivity: maximising the inclusivity of the College's culture and practices, particularly for members of the community who might otherwise be excluded or marginalised.

Last year the College Council agreed to establish an Equity, Diversity and Inclusivity Working Group to oversee information gathering and consultation within College on EDI issues and to draw up an overarching EDI development plan for Darwin. An independent audit of policies, practices and data relating to EDI was commissioned from the Diversity Trust, and the EDI development plan will be prepared later this year. We believe this will strengthen the College's approach and commitment to equity, diversity and inclusion.

Mike Rands, Master





Give Darwin some Love

Darwin Giving Day March 2022



What is it?

Darwin Giving Day is an opportunity for our wonderful Darwin community to come together and focus its fundraising efforts over just 36 hours. You are invited to find out more about some of the fantastic student led projects happening at Darwin, and to get involved with challenges where gifts will be matched £ for £. Darwin is your College, please join other alumni and help in any way you can.

When is it?

It is happening on the 24th – 25th March 2022! So, join us to celebrate our first ever Darwin College Giving Day.

What are you fundraising for?

Over the course of 36 hours, we invite Darwin College alumni, fellows, students, friends, family and staff from all over the globe to show just how much you **#LoveDarwin**, by helping us raise money to support our Student Hardship, Sustainability & Wellbeing funds.

How can I get involved?

We want the Darwin community around the world to be a part of this special event and make our first Giving Day a huge success. There are lots of ways you can get involved – take part in a variety of fundraising challenges and events or become a Darwin Digital Ambassador and share posts with your network on social media. Most importantly, show your love for Darwin and make a gift to one of our fundraising projects.

How will my individual involvement make an impact?

The Darwin community is at its most successful when it works together - your donation will be added to that of many others and together we will make a positive impact on our students lives, well-being and their futures. In fact, during the event, our fundraising focus will be on Student Hardship, Wellbeing and Sustainability projects which will help Darwin students to live and study in Cambridge free of financial burden, and with access to the very best resources and environment.

Want to know more? Please visit our website to find out how you can take part, more about the funds we are supporting, and to join in with this flagship event! Use the link below.

<https://tinyurl.com/bdenejm8>

Exploring the Heritage of the College

Dr Gill Rands, the wife of the Darwin College Master, holds MA and DPhil degrees from the University of Oxford. Her career has encompassed research, science publishing and university administration. Here, she talks about the fascinating task of researching some of the historic objects that are to be found around the College.



In 1965, two Fellows (Chester White and Sylvia Fitton Jackson) were exploring the attic floor of Newnham Grange to consider how the space might be converted into student rooms. Before climbing back down, they discovered a rectangular wooden box, some four feet long, which had been left behind by the Darwin family. Inside the box they were astonished to find a large brass telescope with a tripod stand. Dated to the 1840s, it seems likely that the telescope once belonged to George Howard Darwin (1845-1912) – and possibly, before that, to his father Charles Darwin (1809-1882). Some very worn railway luggage labels on the wooden travelling case indicate that the telescope may have been transported between Cambridge and Charles Darwin's family home at Down House in Kent – perhaps whilst George was a student at Cambridge in the 1860s?

Since December 2020 I have been working as a volunteer with the Master and the Bursar on a project to identify, catalogue and annotate the heritage objects that are owned or held by the College. Most are artworks, furniture or silverware that have been given or loaned to the College. Some items relate to the Darwin

family, who for 80 years owned and lived in the historic buildings that then became the foundation of the College; others are linked to Fellows, staff members or alumni. A few have considerable monetary value; all have a story that brings to life the history and community of the College.

The aim of the project is to create, by drawing on the College's various files, lists, archives and records, a single catalogue of heritage objects, based on photographs taken in situ around the College. A one-page template is used to record each item in a consistent way and to signpost further information in linked electronic and paper files. The catalogue now includes more than 150 objects and in the future we hope to display more of these items, with their stories, in College. Let me give you some more examples.

On a domestic note, the large wooden cabinet that is shoehorned into an alcove in the Old Library has an interesting Darwin family history. George and Maud Darwin were married in July 1884 and within a few months they were in negotiation to buy the house that they named Newnham Grange. The cabinet in the Old Library is one of several pieces of furniture that were made for the house from a single large, heavy, and elaborately carved black-oak 'side-board' that George and Maud had bought on holiday in France in January 1885. The story of this exuberant purchase is told by their daughter Margaret Keynes in her carefully researched account of the history of Newnham Grange, *A House by the River*. Margaret quotes from a letter that Maud wrote to her family in the USA in March 1885:

"Our side-board has been unpacked and it is very beautiful. Unfortunately, two carved heads that formed the handles have been broken off and lost on the way."

As Margaret comments:

[The sideboard] was most unsuitable for an English Georgian house, but Mrs Darwin never ceased to admire the four pieces of furniture they had made out of it. Most important of all was the grand mantelpiece, supported by carved figures at each end, which stood in the dining room for nearly eighty years until it had become so riddled with worm that Darwin



College had to have it removed and burnt. But the sideboard, partly constructed out of some of the same carved wood, still remains intact in the recess [of the Old Library] . . . One of the cupboards lacks a handle; this was the carved head lost on the journey to England, as Mrs Darwin related in her letter. An elaborate two-tiered table, on top of which a large blue oriental [sic] plate for the visiting cards of callers was always kept, was made for the inner hall and is still in the College [now on the landing by the top of the stairs up to the Dining Hall]. More of the black oak was used . . . to construct a mantelpiece for the new fireplace in the hall and is still there [in the hall at the foot of the staircase in Newnham Grange].

A fine photograph of George Howard Darwin in about 1885 now hangs above that mantelpiece in the hall of Newnham Grange; on the opposite wall is a print of a charming portrait of George's American wife Maud in 1889. Maud survived George by several decades and lived at Newnham Grange until her death in 1947.

The source of the photograph of George Howard Darwin brings the links between the Darwin family and the College into the 21st century. The photograph was presented to the College by George's grandson Edward Darwin "in memory of his namesake, my late brother, in recognition of the high place his Fellowship among you took in his life." Edward's brother was George Pember Darwin, who had been an esteemed Honorary Fellow of the College until his death in 2001.

In starting to document the provenance of these objects, I have received guidance from Elisabeth Leedham-Green, the College Archivist and co-editor of the 2013 book that chronicles the first 50 years of the College. As the project progresses, conversations with members of the College community and the Darwin family are helping to augment the records that I am excavating from amongst the files in the Bursary and the College Archive. I would be delighted to hear from anyone who knows about an object that was acquired by the College or has a story to contribute.

If you would like to contribute towards this project, please email alumni@darwin.cam.ac.uk. We will pass your message on to Dr Rands.



Darwin artworks online

Some of the notable works of art that are displayed in the College can be viewed online at ArtUK.org, search for 'Darwin College'. The collection includes the 14 historic portraits of members of the extended Darwin family that have been generously loaned to the College by the Darwin Heirlooms Trust, as well as paintings by Gwen Raverat and the portraits of former Masters.

Images, clockwise from left:

A photograph of George Howard Darwin in about 1885

The grand mantelpiece now in Newnham Grange Hall

The sideboard in the Old Library

A portrait of George's American wife Maud in 1889

A large brass telescope with a tripod stand which possibly belonged to Charles Darwin



The Darwin Family and Cambridge: Preliminary Research Scoping

Dr Edwin Rose is the Darwin College 2020-21 Munby Research Fellow. Here he outlines his current research project, which aims to uncover the Darwin family's contributions to the arts, sciences, and literature, creating an understanding of the rich intellectual heritage an association with the Darwin family brings to Darwin College.

It is hoped that when the project is completed there will be an exhibition displaying objects from both the College's and other Cambridge collections, which will illuminate the activities of a family that have shaped the arts and sciences since the mid-Eighteenth century.



In 1963, Newnham Grange and the Old Granary, home of a branch of the Darwin family since 1885, became available for the first time in almost 80 years. These buildings became the nucleus for the first graduate college in the University of Cambridge and, Darwin College was subsequently named in their honour. Elements of the Darwin family's crest, such as the three escallops, were incorporated into the College's crest in 1966, emblems used by the family since the eighteenth century that continue to associate the college with one of the University's most famous dynasties.

A new research project, headed up by Edwin Rose hopes to provide an overview of the scientific, literary, and artistic work of the Darwin family and their relationship with Cambridge from the time of the eighteenth-century polymath Erasmus Darwin to the early 1960s.

This research aims to decentre the activities of the well-known naturalist Charles Robert Darwin (1809–1882) to understand more about the work of his forbears and descendants.

One of these, his son, George Howard Darwin (1845–1912), Plumian Professor of Astronomy and Experimental Philosophy, purchased Newnham Grange in 1885.

Since its foundation Darwin College has been the custodian of many Darwin family portraits and artifacts, starting with the portrait of Erasmus Darwin by Joseph Wright of Derby painted around 1770, an image renowned as a masterpiece of enlightenment portraiture.

More than fifty years before his famous grandson, Erasmus published controversial evolutionary theories, campaigned for the abolition of slavery, supported the French Revolution, promoted education for women and challenged orthodox Christian views. Erasmus took a BA at St John's College (1754)

In 1791 Erasmus described his time in Cambridge to John Horsman:

'At Cambridge I never spent evenings with drunkards, but drank tea with company either at home or abroad every day, and became more acquainted with all that I thought ingenious, or that I could learn anything from.'

Cambridge presented members of the Darwin family with the perfect intellectual setting for innovation. Although Erasmus's son Robert (a physician in Shrewsbury), had little to do with Cambridge, Robert encouraged his sons to study at Cambridge which set Charles on the path that would define his life's work.

After his time at Cambridge Charles relied on a network of collaborators to obtain information and by the 1870s Charles's children were key figures. His daughter, Henrietta Darwin (later

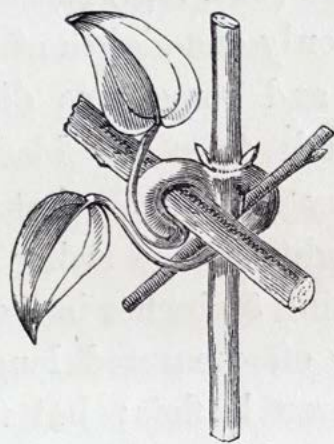


Fig. 1.

Clematis glandulosa.

With two young leaves clasping two twigs, with the clasping portions thickened.

Images, clockwise from left:

Erasmus Darwin (1731–1802) by Joseph Wright of Derby (c. 1770). On loan from the Darwin Heirloom Trust.

George Howard Darwin's illustration of *Clematis glandulosa* on page 47 in Charles Darwin's *The Movements of Climbing Plants* (1875). Darwin College, Cambridge.

An image of the inscription from the copies of the *Descent of Man* (1871) Charles Darwin presented to Laura Mary Forster. Darwin College, Cambridge.

Litchfield) was responsible for editing the text of *The Descent of Man* (1871) and the College owns a copy of the first edition, inscribed by Charles himself. This book was presented to Laura Mary Forster (1839–1924), a family friend and aunt of E. M. Forster, who maintained a lifelong correspondence with Henrietta.

Another example of these collaborative working practices can be seen in Darwin College's copy of *The Movements and Habits of Climbing Plants* (1875), the illustrations in which were produced by Darwin's second son, George Howard Darwin (1845–1912).

George Darwin continued to collaborate with others when researching the natural world for the rest of his life. By the time he purchased Newnham Grange, George was engaged in a global correspondence network, sourcing information on the relationship between tides and lunar motion while founding the field of geophysics. Research on George Darwin's archival and book collection, now held by Cambridge University Library and the Whipple Library, has uncovered details of correspondents in the USA, South Africa, Australia, Greenland, and several Indian cities.

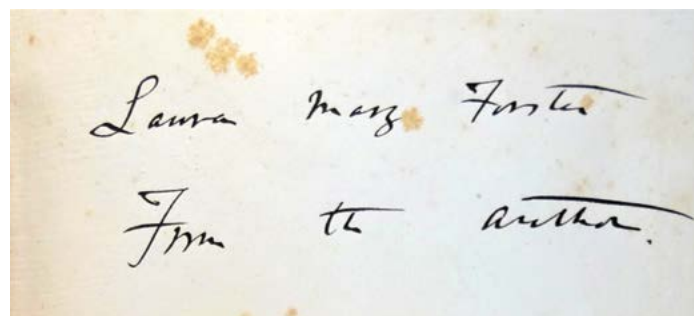
George Darwin's network was further augmented through his presidency of the British Association for the Advancement of Science (BAAS). His networking relied on the British Empire, an involvement with imperial projects that this research will investigate, to show how this shaped scientific research but also with an intention to unlock the activities and contributions of numerous hitherto unnamed collaborators in the production of natural knowledge.

George's wife, the American socialite Maud du Puy, and their children, often participated in these trips. Gwen Darwin (later Raverat) accompanied her father when he travelled to Boston to give the Lowell Lectures in 1897—the basis for his book *The Tides and Kindred Phenomena in the Solar System* (1898).

Gwen is best known as one of the first artists to develop woodcut engravings as an artform, many of which illustrate her memoir *Period Piece: A Cambridge Childhood* (1952). Gwen's woodcuts, such as that of Ely Cathedral, became well known across the country as the main images used by London North Eastern Railways in their advertising campaigns. Working in collaboration with her brother-in-law, Geoffrey Keynes, Gwen produced the designs for *Job: A Masque for Dancing* (1931). The music was composed by Ralph Vaughan Williams, (Ralph's two great-great-grandfathers were Josiah Wedgwood (1730-95), the founder of the pottery at Stoke-on-Trent, and Erasmus Darwin).

Sir Charles Galton Darwin (1887–1962), the last Darwin of Newnham Grange, worked for the National Physical Laboratory, making several breakthroughs in the fields of statistical mechanics, quantum physics and working with scientists such as Ernest Rutherford and Niels Bohr.

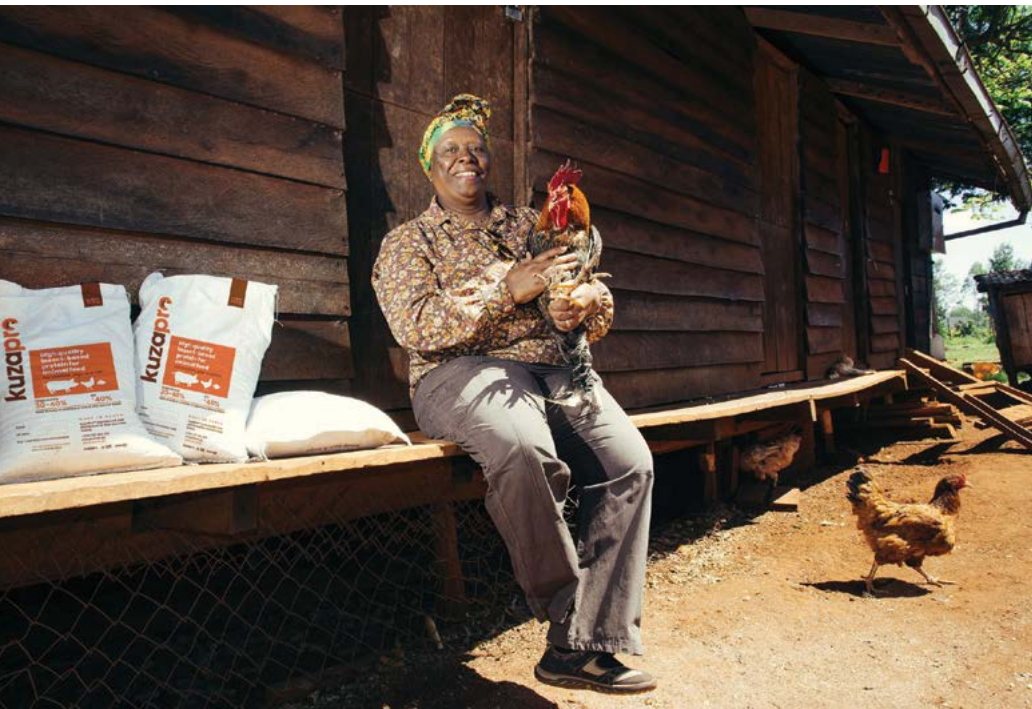
Overall, this ongoing research project, aims to uncover the Darwin family's contributions to the arts, sciences, and literature, creating a new understanding of the rich intellectual heritage an association with the Darwin family brings to the College. The intended output of this work is an exhibition designed to display objects from the College's and other Cambridge collections to illuminate the activities of a family that shaped the arts and sciences since the mid-eighteenth century—in a space that continues to inspire research and innovation.



Sanergy

Darwin College nominated Earthshot Prize Finalist

In 2020 Darwin College was one of 200 organisations across the world invited to submit nominations for the 2021 Earthshot Prize. Launched by The Royal Foundation, a centre for philanthropy led by The Duke and Duchess of Cambridge, the prize aims to incentivise changes that will help repair our planet over the next ten years.



College Fellows, students, and alumni suggested possible social and environmental organisations to be put forward to The Royal Foundation. A specially formed College selection committee short-listed the candidates and proposed four nominees to the Earthshot selection panel. We were delighted that Darwin's nominee 'Sanergy' was among the 15 chosen finalists.

Equally Sanergy greatly appreciate the nomination. One of the co-founders of Sanergy, David Auerbach comments:

'We are deeply grateful to the Darwin College community for nominating our solution and look forward to developing a great formal research partnership to advance our work even further over the next few months.'

Sanergy is based in Kenya - it has a simple mission: to harness the circular economy in large cities to transform waste into valuable agricultural inputs that improve food systems and the livelihood of farmers. The company is improving the health, food and economic security of emerging economies. It is helping Kenya accelerate

sustainable development goals including access to adequate and equitable sanitation for all, reducing the adverse environmental impact of cities and ensures sustainable consumption and production patterns.

The world is rapidly urbanising. By 2050, 2.5 billion inhabitants will be added to the world's urban population, with almost 90% of this growth happening in Asia and Africa. This is putting enormous pressure on cities to manage their organic and sanitation waste sustainably.

Currently, cities generate 2 billion tonnes of solid waste annually and the World Bank estimates that by 2050, annual waste generation will increase by 70%, posing a huge environmental and economic challenge globally. Simultaneously, food insecurity from insufficient agricultural yields is a growing concern. In Kenya, farmers lack access to organic fertilizers and nutritious feed for their livestock to adequately meet the demand of Kenya's growing population. This situation has been aggravated by COVID-19 and changing climatic conditions, which are responsible for an estimated 38% increase in the proportion of food-insecure Kenyans.

A lack of access to safely managed sanitation services also undermines the health of city dwellers particularly those living in slums where many residents don't have access to basic sanitation facilities, as a result,

sanitation related illnesses cost the country up to 2% of its GDP every year.

Sanergy has pioneered a **“Collect-Convert-Reuse” circular economy business model** that safely transforms human and other organic waste into products that strengthen Kenya’s local food system, by collecting sanitation and organic waste generated in Nairobi and its neighbourhoods. The human waste is harnessed through waterless toilets, which serve over 150,000 residents living in informal settlements.

Organic waste is collected from agribusiness, the city’s markets, central kitchens, and hotels, all of which generate 2,000 tons of waste on average every single day. This is moved to a recycling factory for treatment and conversion into organic fertiliser, insect-based protein for animal feeds and biomass briquettes for energy. The agricultural inputs produced are then sold within the Kenyan market and beyond. The organic fertiliser boosts crop yields by 30%, improves long-term soil fertility and reduces usage of chemical fertilisers.

A final word from David Auerbach: *‘Participating in the first ever Earthshot Prize community has been an inspiring experience for our team. It has reaffirmed that the circular economy is transformational and is one of the best chances we’ve got at building a green future sustainably.’*



Safely collecting Organic Waste



High quality protein feed improves Farmers yields



Jane Marriott OBE (right in picture), UK High Commissioner to Kenya and Darwin alumna (1997, International Relations) hosted a reception for Earthshot Prize finalists Sanergy at the High Commission in Nairobi.

Chester White

(1934 - 2021)



Enduring Houses rest on strong foundations. For Darwin College, Chester White was a foundation-layer. For more than 50 years his kindness, his quiet energy, his chuckle helped build our community. Founder of the Darwin Boat Club, he showed us that even as a novice at dawn on a freezing wintry river, we can find real fulfilment, so also in our wider scholarship and in our lives.

Chester was born in 1934. After leaving Winchester College, he read Medicine at Merton College, Oxford, where he rowed in the Merton Eight. He was a constant friend and supporter of the Merton Boat Club and in 2016 a racing four was named 'Chester White'.

Chester came to Cambridge in 1961 as House Surgeon in the new neurosciences unit at Addenbrooke's Hospital. He had hoped to pursue postgraduate studies at Merton's sister college, Peterhouse. However, Peterhouse didn't take post-graduates, and suggested he try round the corner where a new College, Darwin, had just been set up to do that.

He applied to Darwin for research into haematology under Frank Hayhoe, who was one of the founding Fellows of Darwin and its first Vice-Master.

So, in 1965 he moved to Darwin to study for a PhD and was one of our first generation of graduate students. It was the happiest of accidents. He brought with him his chuckle, and of course, as the only rower in the student body he founded a boat club – the Darwin College Boat Club (DCBC) was born.

In 1969 (before he completed his PhD) he became an Official Fellow, and, after more than 30 years of cheerful presence and interest in all, he became an Emeritus Fellow in 2001. Those are the bare details: what memory adds is the ubiquitous smile, the humour, the gentle kindness, the solid support for so many worried students.

His career was in Medicine. And, after more degrees than most, this was to follow a typically unique path. He was the first doctor to move into the New (as it was then) Addenbrooke's accommodation block. After a period as a research pathologist he became a GP in Trinity Street, in a move prompted by the young

family that followed his marriage to Liz, a nurse working at Mill Road Maternity Hospital.

He displayed an uncanny ability to really listen to his patients as well as just patch them up. In the early 80's he was commissioned into the Territorial Army as a Medical Officer for the Royal Anglian Regiment. This work was to win him an MBE which, as far as Liz was concerned, stood for *My Beloved 'Ero*. In 2002 he was awarded the Queen's Jubilee Award for services to the youth of Cambridge through his work for the Cambridgeshire Army Cadet Force.

Chester's childhood had taken him from Hong Kong to Australia via the Philippines during WWII. Despite being stretchered off the boat in Sydney with Yellow Fever, he enjoyed travel. He regarded himself as a 'survivor' of an early Comet flight to East Africa and regretted not taking up a position at the British Antarctic Survey. But he would eventually make it to Antarctica and return to East Africa with the Cambridge University Officer Training Corps (that brought with it the sad task of performing a post-mortem on one of their



party who was killed by an elephant), as well as trips to the Mediterranean as Ship's Doctor on cultural cruises.

Chester found a home from home at Darwin - something he cherished after that peripatetic childhood. Darwin was his refuge and became part of the lives of Liz and their sons, Rowland, Matthew and David. Christmas parties in the College Dining Hall or summer afternoons by the Cam cheering bumps crews coached by Chester provide happy, vivid memories. This was also true of Nant-y-feinen, the house he designed and built in Wales within sight - on a rare clear day - of Pen-y-fan in the Brecon Beacons. He was never happier than when he was pottering around in the drizzle.

He was immensely proud of his connection with Darwin and of the College's incredible transformation over his lifetime. He was involved in this in some unlikely ways. On one occasion, crawling through an attic to assess its suitability for conversion into room space, he found a wooden case containing an antique telescope that age and provenance suggested might well have belonged to Charles Darwin himself. It now enjoys pride of place in the Master's room.

A College endures for centuries, perhaps millennia. Chester's passing reminds us of our debt to Darwin's first foundation-laying generation. With humour and kindness, he helped to build our House; it will last. Our deep condolences to his family and his many, many friends.

Rowland White, Euan Nisbet and Mary Fowler.

If you would like to share your memories of Chester please drop us a line – alumni@darwin.cam.ac.uk.

Liz White

The college is greatly saddened to report that Chester's beloved wife Liz passed away peacefully in her sleep on 13 January 2022. Liz will be remembered by many within the Darwin community as a cheerful, positive and life-affirming presence. She attended many Darwin events over the years and was always interested in everyone and everything around her; she will be much missed. Many condolences to her family.



Opposite:

Chester in front of the College on Silver Street

First students - Chester White (third from the left, back row) with fellow students (1965)

Above:

Chester acting as an Usher at the Darwin Lecture Series in 2014

Chester walking by the spiral staircase at a graduation in 2014



Events in 2022

We are pleased to be hosting alumni dinners and garden parties in College once again. However, the events listed below are subject to change depending on any COVID limitations in place at the time.

It is hoped that later in 2022 the Master and Development Director will be able to travel to visit alumni around the world – events will be organised when safe to do so.

Our popular Zoom Events Series will continue to run alongside in-person events and will be advertised on our website, social media and via email.

Alumni Events:

Friday 18th March:

Alumni and Fellowship
Formal Hall

Friday 13th May:

Alumni Reunion Dinner for
years 1975-1987 and 1997–
2007

Friday 20th May:

Former Fellows Dinner

Friday 17th June:

Alumni and Fellowship
Formal Hall

Sunday 10th July:

Alumni Garden Party

Darwin College Lecture Series 2022:

The Lecture Series will be held at The Lady Mitchell Hall, Sidgwick Avenue and streamed live on YouTube. Please check our website for details.

FOOD

21st January

Professor Sarah Bridle
University of Manchester
Food and Climate Change

28th January

Professor Andrew Knight
University of Winchester
Should Cats and Dogs go
Vegan?

4th February

Ms Sarah Mukherjee
Journalist
Food, Power and Society

11th February

Mr Richard Parmee
University of Cambridge
X-Rays and Food Safety

18th February

Mr Alex Rushmer
Chef
Food as Expression

25th February

Dr Melissa Calaresu
University of Cambridge
Food and Cultural History

4th March

Professor Martin Jones
University of Cambridge
Archaeology and Discovering
the Food of the Past

11th March

Professor Bhaskar Vira
University of Cambridge
The Political Economy of
Conservation and Food
Security

Editors: Sophia Smith, John Dix, Samuel Venn, Emily Rigby, Hebe Hamilton

The editors especially welcome short articles, pictures and news from all alumni.

Correspondence to: darwinian@darwin.cam.ac.uk